

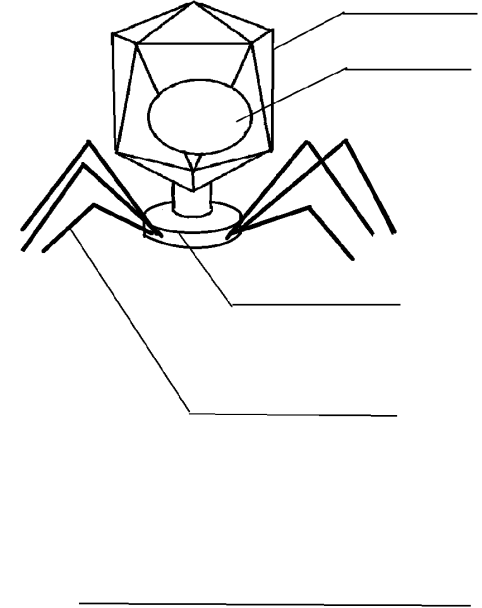
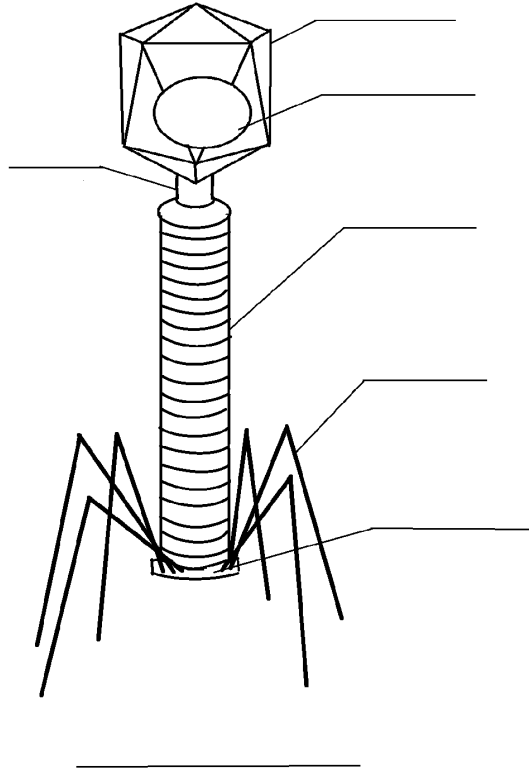
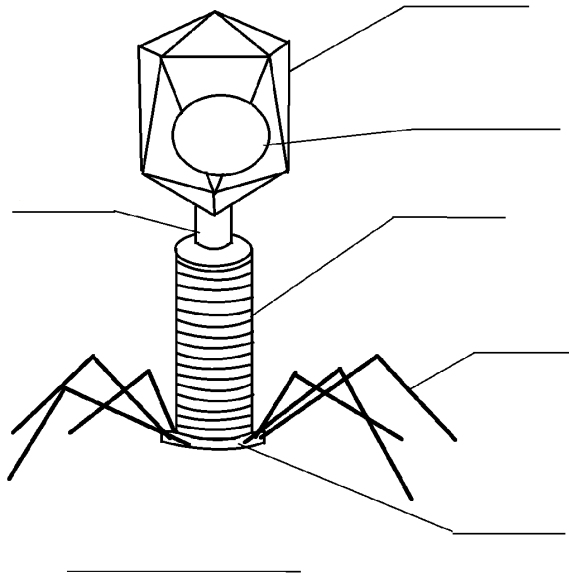
Phage Anatomy and Phage-Host Interaction

Coloring edition

Lucia Soto Herrera, Gabriella Beltran, Joy Abaidoo

PHAGE MORPHOLOGY

Using the word bank, label the parts of each phage morphology. Color each part of the phages as instructed below!



WORD BANK

(some words will be used more than once!)

Myoviridae

Tail sheath

Baseplate

Siphoviridae

Genetic material

Neck

Podoviridae

Capsid head

Tail fiber

COLOR THE...

Tail sheath **blue**

Baseplate **purple**

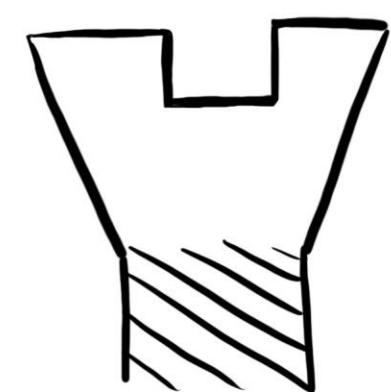
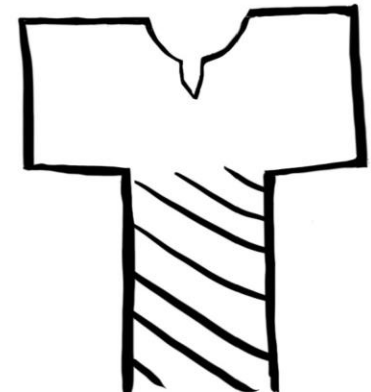
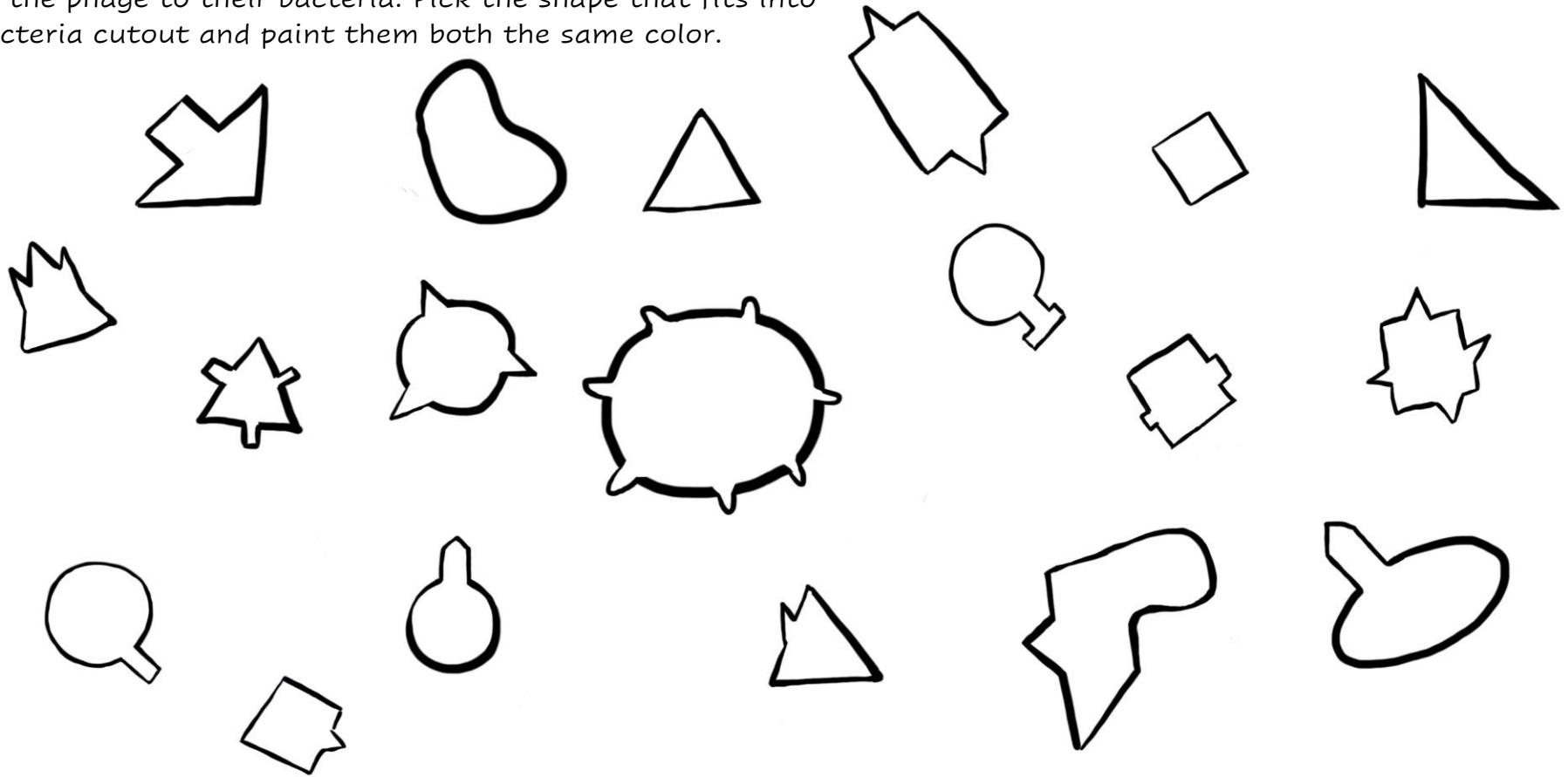
Genetic material **green**

Neck **yellow**

Capsid head **red**

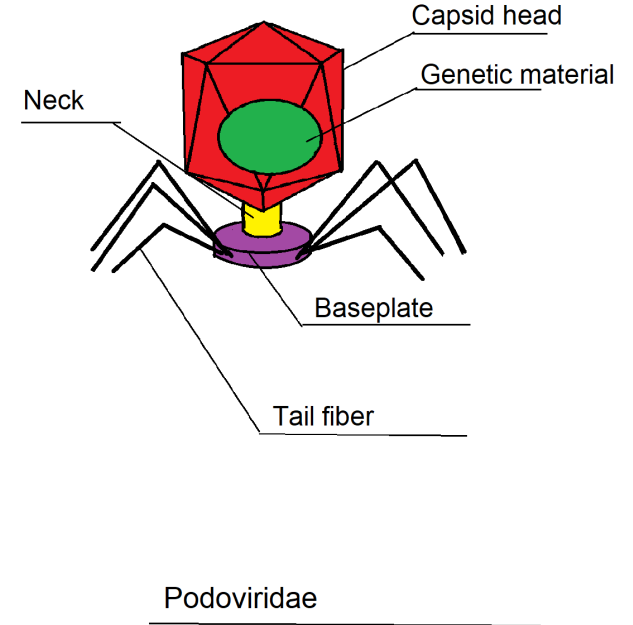
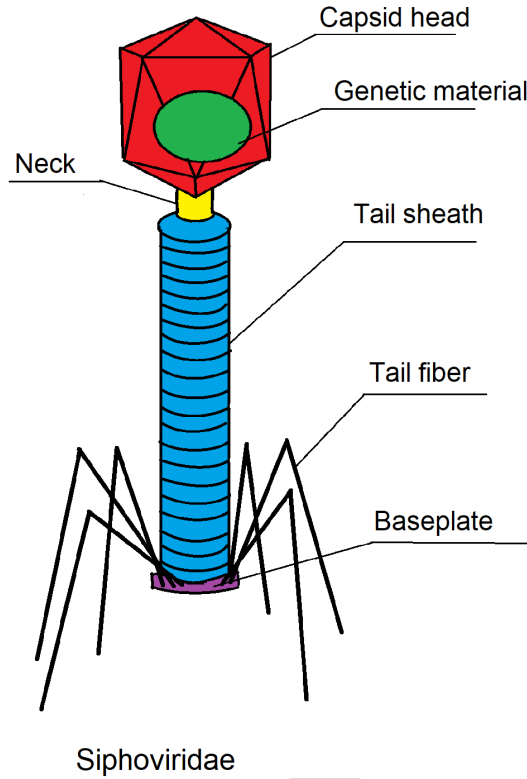
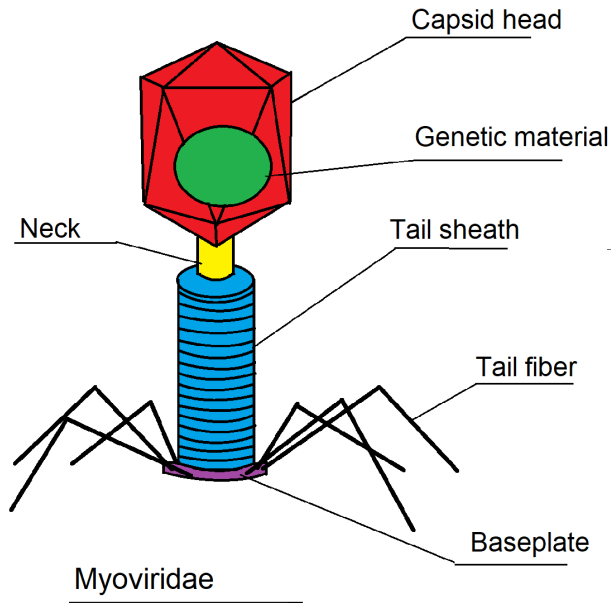
Did you know? Bacteriophages are the most abundant organisms on Earth? These tiny creatures are very specific to their host. That is, they must match their hosts exactly in order to infect them.

Match the phage to their bacteria. Pick the shape that fits into the bacteria cutout and paint them both the same color.



PHAGE MORPHOLOGY

Using the word bank, label the parts of each phage morphology. Color each part of the phages as instructed below!



WORD BANK

(some words will be used more than once!)

- | | | |
|--------------|------------------|------------|
| Myoviridae | Tail sheath | Baseplate |
| Siphoviridae | Genetic material | Neck |
| Podoviridae | Capsid head | Tail fiber |

COLOR THE...

- | | | | |
|------------------|-------|-----------|--------|
| Tail sheath | blue | Baseplate | purple |
| Genetic material | green | Neck | yellow |
| Capsid head | red | | |

Did you know? Bacteriophages are the most abundant organisms on Earth? These tiny creatures are very specific to their host. That is, they must match their hosts exactly in order to infect them.

Match the phage to their bacteria. Pick the shape that fits into the bacteria cutout and paint them both the same color.

